

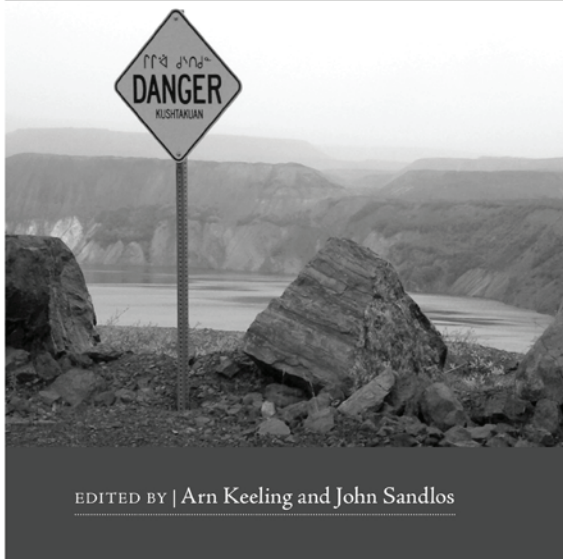


UNIVERSITY OF CALGARY
Press



Mining and Communities in Northern Canada

History, Politics, and Memory



EDITED BY | Arn Keeling and John Sandlos

MINING AND COMMUNITIES IN NORTHERN CANADA: History, Politics, and Memory

Arn Keeling and John Sandlos, editors

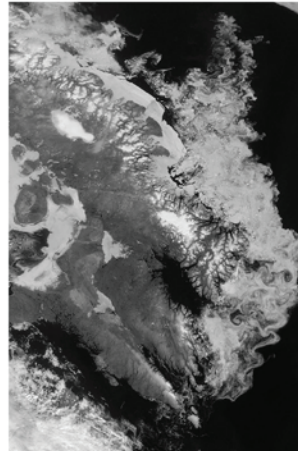
"The book situates itself at the intersection of two of the signal developments shaping Canada's political landscape today: the renewed boom in natural resource extraction and the mobilization of First Nations communities around territorial stewardship and self-determination. The book brings a much needed historical perspective on this juncture and its editors are explicit in their hope that the case studies assembled here will have bearing on contemporary debates and policy-crafting."

Daviken Studnicki-Gizbert, McGill University

Contributors: Patricia Boulter, Jean-Sébastien Boutet, Emilie Cameron, Sarah M. Gordon, Heather Green, Jane Hammond, Joella Hogan, Tyler Levitan, Hereward Longley, Scott Midgley, Kevin O'Reilly, Andrea Procter, and Alexandra Winton.

400 pp, illustrations | \$34.95
Paperback, e-book | Fall 2015

NICHE
NATIONAL INDIAN HISTORY & HERITAGE SOCIETY
NATIONALE INDIENNE SOCIÉTÉ D'HISTOIRE ET D'HÉRITAGE

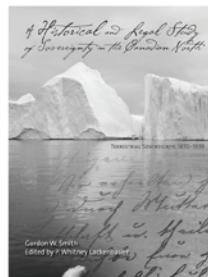


BAFFIN ISLAND: Field Research and High Arctic Adventure, 1961-1967

Jack D. Ives

This book provides a highly readable account of the organizational and logistical challenges, the training of young field assistants in their first Arctic experience, the exciting day-to-day fieldwork for senior scientists in a range of disciplines and, not least, the highs and lows of travel in and out of remote and forbidding territory.

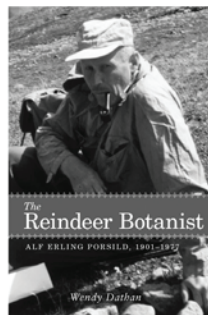
232 pp, illustrations | \$34.95
Paperback, e-book | Fall 2016



A HISTORICAL AND LEGAL STUDY OF SOVEREIGNTY IN THE CANADIAN NORTH: Terrestrial Sovereignty, 1870-1939

Gordon W. Smith,
edited by P. Whitney Lackenbauer

512 pp, illustrations | \$39.95
Paperback, e-book | Available

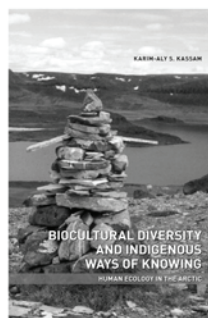


THE REINDEER BOTANIST: Alf Erling Porsild, 1901-1977

Wendy Dathan

Porsild earned universal respect for his prodigious publications and intimate knowledge of the people, plants, and land around Canada's Arctic Circle.

748 pp, illustrations | \$44.95
Paperback, e-book | Available



BIOCULTURAL DIVERSITY AND INDIGENOUS WAYS OF KNOWING: Human Ecology in the Arctic

Karim-Aly Kassam

Kassam positions the Arctic and sub-Arctic as a homeland rather than simply a frontier for resource exploitation.

288 pp, illustrations | \$34.95
Paperback | Available



Canada



Canada Council
for the Arts
Conseil des Arts
du Canada

Visit us at www.uofcpress.com



ARCTIC ANTHROPOLOGY

Arctic Anthropology is an international journal devoted to the study of Old and New World northern cultures and peoples. Founded in 1962 by Chester S. Chard, *Arctic Anthropology* covers archaeology, ethnology, physical anthropology, and related disciplines, with emphasis on:

- Studies of specific cultures of the arctic, subarctic and contiguous regions of the world
- The peopling of the New World
- Relationships between New World and Eurasian cultures of the circumpolar zone
- Contemporary problems and culture change among northern peoples
- New directions in interdisciplinary northern research

Subscriptions include online access with features that users and librarians look for, including:

- Search across full text, abstracts, titles, tables of contents, figures, and across journals
- View tables of content and abstracts
- E-mail article information to a friend
- Sign-up for e-mail alerts
- View most read papers list
- View most-cited papers list
- Subscribe to the journal

Please visit our website at: <http://aa.uwpress.org>



1930 Monroe Street, 3rd Floor, Madison, WI 53711-2059 U.S.A.
Phone: 608 263-0668 or 608 263-0654
Fax: 608 263-1173, or toll-free (U.S. only) 800 258-3632
journals@uwpress.wisc.edu • uwpress.wisc.edu/journals

Transforming Ethnographic Knowledge

*Edited by Rebecca Hardin and
Kamari Maxine Clarke*

Contributors:

Mary Catherine Bateson	George Marcus
Kamari Maxine Clarke	J. Lorand Matory
Rebecca Hardin	Sidney Mintz
Csilla Kalocsai	Melissa Remis
Macia Inhorn	

Anthropologists trace the changes they have seen in ethnography as a method and an intellectual approach, and they discuss the adaptation of ethnography for business, conflict resolution and demobilization, wildlife conservation, education, and biomedicine.



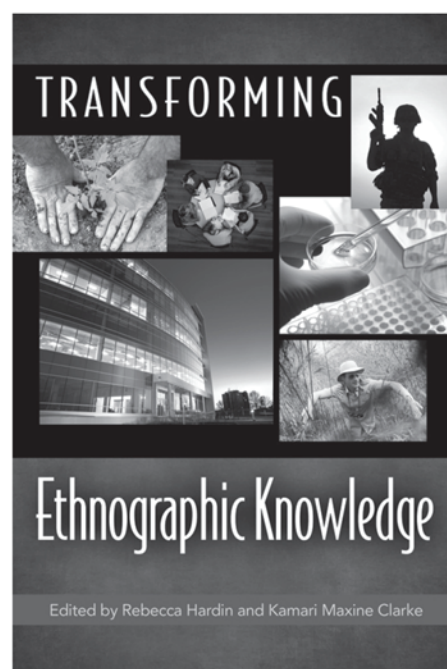
Rebecca Hardin is associate professor in the School of Natural Resources and Environment and in the Department of Anthropology at the University of Michigan, Ann Arbor. She is coeditor

of *Corporate Lives: New Perspectives on the Social Life of the Corporate Form*, a special edition of the journal *Current Anthropology*.



Kamari Maxine Clarke is professor of anthropology at Yale University and author of *Fictions of Justice: The International Criminal Court and the Challenge*

of *Legal Pluralism in Sub-Saharan Africa* and *Mapping Yoruba Networks: Power and Agency in the Making of Transnational Communities*.



August 2012
248 pp. 6 × 9
1 table

Paper ISBN 978-0-299-24874-1 \$29.95
eBook ISBN 978-0-299-24873-4 \$19.95

“This multifaceted, energizing collection reminds us of the many reasons that ethnography’s sustained engagement with others is so vital—not just to anthropology but also for analysis and action in the contemporary world.”

—Kirin Narayan, author of
Alive in the Writing: Crafting Ethnography in the Company of Chekhov

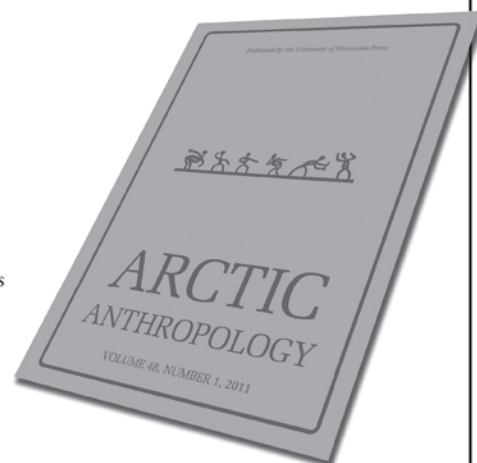
UNIVERSITY OF
WISCONSIN
PRESS

<http://uwpress.wisc.edu/books>

ARCTIC ANTHROPOLOGY

Edited by Christyann M. Darwent, University of California, Davis
ISSN: 0066-6939, e-ISSN: 1933-8139, Published biannually

ARCTIC ANTHROPOLOGY, founded in 1962 by Chester S. Chard, is an international journal devoted to the study of Old and New World northern cultures and peoples. Archaeology, ethnology, physical anthropology, and related disciplines are represented, with emphasis on: studies of specific cultures of the arctic, subarctic and contiguous regions of the world; the peopling of the New World, and relationships between New World and Eurasian cultures of the circumpolar zone; contemporary problems and culture change among northern peoples, and new directions in interdisciplinary northern research.



Special Issue: Frederica de Laguna 43 #2, Allen P. McCartney 41 #2, The Tops of the World 46 #1-2, Don Dumond 47 #2.



If you value *Arctic Anthropology*, please let your librarian know!

I recommend the library subscribe to *Arctic Anthropology* because:

- ☐ This journal will be an essential resource for myself and my colleagues
- ☐ I will refer my students to this journal
- ☐ I publish/intend to publish articles within this journal
- ☐ Other _____

Please visit us online at aa.uwpress.org to:

- › Search across full text, abstracts, titles, table of contents, figures, and across journals
- › View tables of content and abstracts
- › Email article information to a friend
- › View most read & most-cited article lists
- › Subscribe to the journal
- › View FREE sample issue

ORDER SPECIAL ISSUES

- ☐ 43 #2, Frederica de Laguna, \$28
- ☐ 41 #2, Allen P. McCartney, \$28
- ☐ 46 #1-2, The Tops of the World, \$56
- ☐ 47 #1, Don Dumond, \$28

2014 SUBSCRIPTIONS

Individuals

- ☐ print & online \$75
- ☐ online only \$66

Institutions

- ☐ print & online \$250
- ☐ online only \$216

Add postage for print/online subscriptions which are mailed to addresses outside the U.S.A.

- ☐ airmail, add \$22/year

Please remit funds in U.S. currency.
Canadian subscribers add 5% GST.

SUBSCRIBE TO ARCTIC ANTHROPOLOGY TODAY!

NAME _____

ADDRESS _____

CITY _____

STATE _____

ZIP _____

COUNTRY _____

Please charge my *Arctic Anthropology* subscription to: ☐ MasterCard ☐ VISA

\$ _____

TOTAL AMOUNT CHARGED: _____

CARD HOLDER'S SIGNATURE _____

CREDIT CARD NUMBER _____

EXPIRATION DATE: _____

EMAIL ADDRESS: _____

PHONE NUMBER: _____

 THE UNIVERSITY OF WISCONSIN PRESS
JOURNALS DIVISION

1930 Monroe St., 3rd Floor, Madison, WI 53711-2059, U.S.A.
Phone: (608) 263-0668 | Fax: (608) 263-1173, US Fax Only 1-800-258-3632
journals@uwpress.wisc.edu | <http://uwpress.wisc.edu/journals/>